



THE FUTURE IS HYBRID
FABRICATION • MANUFACTURING • AUTOMATION

PRODUCT LINE



INNOVATION. QUALITY. PERFORMANCE.
MULTICAM
Complete CNC Solutions



APEX 3R

NEW

celero series 3

celero



ACS is a distribution partner for MultiCam, a global manufacturer of innovative CNC cutting solutions for industries ranging from sign & graphics to digital finishing & fabrication, sheet-metal to plate-steel processing, hardwoods to cabinet making, thermoform trimming to plastics fabrication, as well as a wide variety of aerospace and automotive applications.



celero series 3

A Digital Cutting System that combines powerful routing and knife-cutting capabilities to increase production and increase profits.

celero



NEW

MultiCam's Celero 3 Series is an economic and fully capable turnkey cutter/router solution for small or mid-sized grand format printers. With an impressive list of standard features like the Universal and Oscillating Knife as well as a 3 HP Router Spindle, the **Celero 3 Series** is suited to provide versatility as it can cut a multitude of materials with a high-degree of precision.

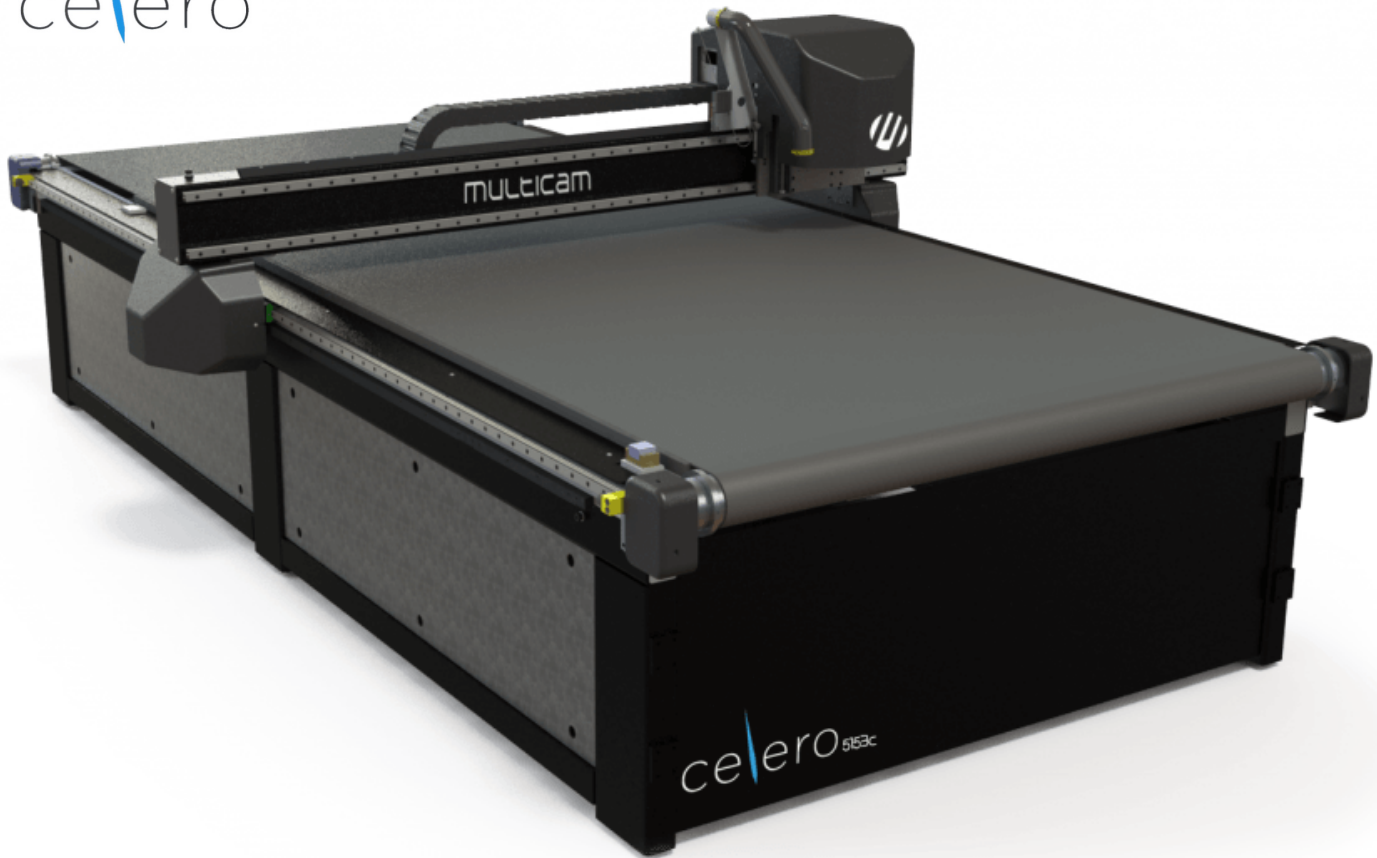




celero series 5

MultiCam Celero 5 Series combines high speed camera registration with powerful routing and knife-cutting for a versatile yet affordable system.

celero



NEW

MultiCam's Celero 5 Series combines both powerful routing and high-speed knife cutting capabilities in a Digital Cutting system. With knife cuttings speeds up to 4,000 Inches per Minute (IPM) and the MultiVision Digital Registration Camera System, the **Celero 5 Series** family of cutters/routers provides end-users the performance and high-quality cutting capabilities demanded into today's fast-paced industry.

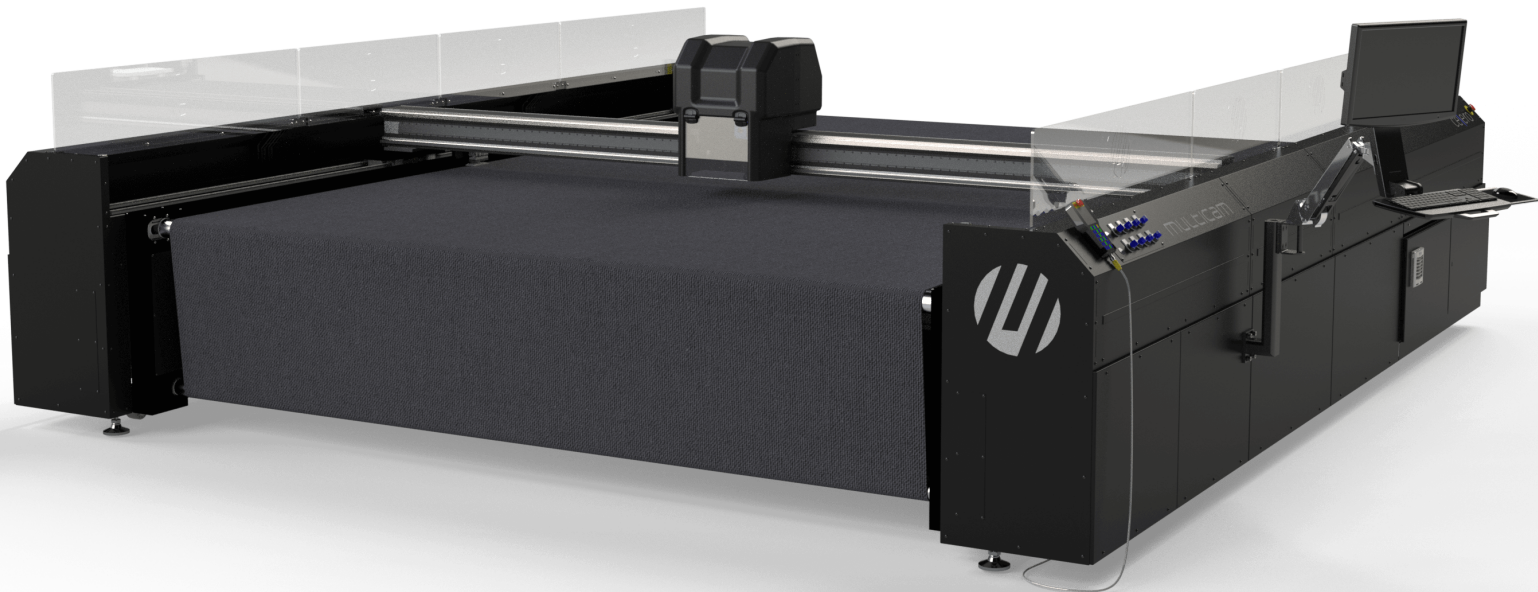




celero series 7

The MultiCam Celero 7 Series Digital Finishing Cutting System seamlessly balances speed and precision all in one package.

celero



NEW

With five different models ranging in table size from 5' x 10' to 10' x 13' the **Celero 7 Series** provides the capacity to cut three (3) 4' x 8' boards on the table at the same time. With it's high-speed cutting, up to 7,800 IPM, the **Celero 7 Series** will allow you to increase productivity to meet your customers demands. Engineered to provide end-users with unparalleled performance as well as pristine cut quality. Whether you're cutting Foamcore, Coroplast, Styrene, Acrylic, Metals or other substrates, the **Celero 7 Series** will give you the consistency you are looking for.





APEX 1R CNC Router

The **APEX 1R** CNC Router is designed for smaller sized businesses or shops but still offers the same great performance you expect from MultiCam. Due to our highly effective engineering and manufacturing processes, the **APEX1R** offers maximum versatility and can easily be integrated into existing workflows.



Designed to cut a multitude of materials such as composite material, foam, plastic, wood, and much more the APEX1R CNC Router is dependable and built to last. With many locations across the globe, service and support are always nearby and ready to help.

APEX 3R digital Router

MultiCam's **APEX 3R** CNC router is a next generation machine loaded with standard features normally associated with more expensive machines.



The automatic tool changer gives the user maximum machining flexibility, and the all-steel tube frame, moving gantry design allows for machining of large parts while maintaining a small, space saving footprint.

Designed for a wide range of applications, the APEX3r is the perfect solution for companies looking for both value and high performance in a CNC Router.





3000 Plasma

The **3000 Series CNC Plasma** – Durable, Versatile, and Efficient. Then the **3000 Series Plasma** was made with a sturdy and rigid all-steel plate frame, you can easily support any standard or high-definition plasma unit you need.



The high-speed contouring system you get with the 3000 Series Plasma. The downdraft table takes care of all dust and debris so you have a clear working space and can do the best job possible.

The 3000 Series Plasma also comes with the integrated material database. When you switch the type of material you're cutting, you have to use valuable time to set many other parameters like feedrate, pierce delay, pierce height, and others. With the material database, you simply select the material to be cut and these parameters adjust automatically.

1000 Plasma

MultiCam's **1000 Series CNC Plasma** cutting system makes for the perfect fit for businesses that need high performance at an entry-level plasma price.



A solid steel frame means the 1000 Series has minimal vibration and excellent precision. The 25 mm linear ball bearing rails increase this stiffness even further.

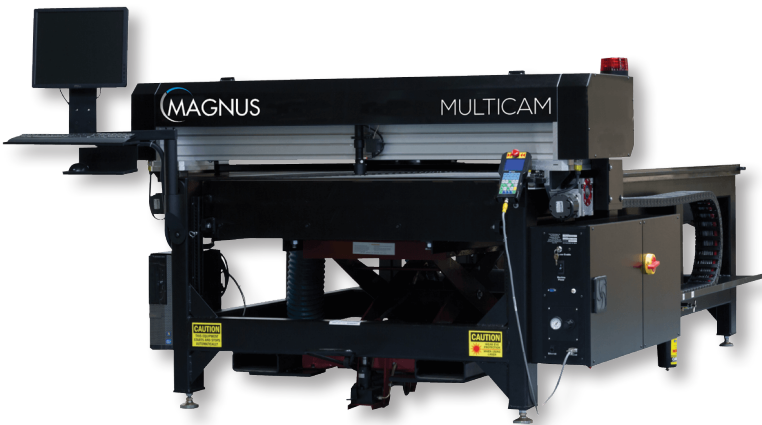
Automatic tool calibration means you save more time and spend it increasing your productivity by cutting instead of configuring. The precision X-axis two phase high speed stepper motors aid in cutting accurately, and require virtually no maintenance.





Mangus Laser

The **Magnus CO2 Laser** – A Precise and Cost Effective Laser Cutting System. Equipped with an impressive list of standard features and a host of available options, the Magnus CO2 Laser can cut or engrave for nearly any application.



The **Magnus CO2 Laser** one of the best selling Laser CNC systems on the market, it is also one of the fastest engraving systems too. When equipped with engraving accessories, the Magnus is capable of quickly and efficiently processing large areas at a resolution equivalent to printing.

The **Magnus Laser** can produce quality finishes on a vast amount of materials and a variety of applications. The system performs at such a high-degree of precision compared to other cutting alternatives.

V SERIES WaterJet

V-Series CNC WaterJet – High Performance, Versatility, and Productivity at an Affordable Price. Just the solution you've been looking for. With the V-Series, you can make pure water or abrasive cuts.



The **V-Series CNC Waterjet** may be just the solution you've been looking for. With the V-Series, you can make pure water or abrasive cuts.

The **V-Series CNC Waterjet** comes with multiple heads so you can simultaneously machine parts. And, you can accurately cut just about anything you want. Cutting applications range from steel to galvanized metal, stone, glass, and plastic. You can cut for nearly any common application.





3000 waterjet

An Easy-to-Use and Affordable Cutting Solution for a Wide Variety of Materials. The high pressure **MultiCam 3000 WaterJets** can cut most materials with a high degree of accuracy without heat.



If you need to cut a wide variety of materials, you're in the right place when looking at the **MultiCam 3000 Series CNC Waterjet**. With waterjet machining, you get an impeccably accurate cut without an edge impacted by heat. You get 8 different options for customization to choose from so you can meet all your cutting applications. With a cut speed of 1,500 IPM and rapid traverse speed of 2,100 IPM the **3000 Series Waterjet** works quickly enough to get your project done by your deadline, without sacrificing cut quality.





6000 waterjet

Affordable, Easy-to-Use, and Perfect for Large Format Cutting. The **6000 Series CNC Waterjet** may be just the solution you've been looking for. It's been specially designed to accurately cut a wide variety of materials at high speeds. And of course, since you cut with water, you get an excellent finish without an edge damaged by excessive heat.



Modular base rails have been made from $\frac{1}{2}$ " thick structural tubing. This means you have an extremely rigid cutting base, which nearly eliminates vibration and keeps your cutting quality high. The **6000 Series CNC Waterjet** also runs much quieter (and especially so at higher speeds) than a rack-and-pinion system because of the Alpha gearboxes and precision manufacturing the machine frame.





Ferndale Headquarters
1355 Pacific Place, Unit #117
Ferndale, WA 98248

In Washington call 360-318-7534
In Oregon call 503-585-8741

Customerservice@acs-iws.com
Web: www.appliedcuttingsolutions.com

© 2018 Copyright. Applied Cutting Solutions.